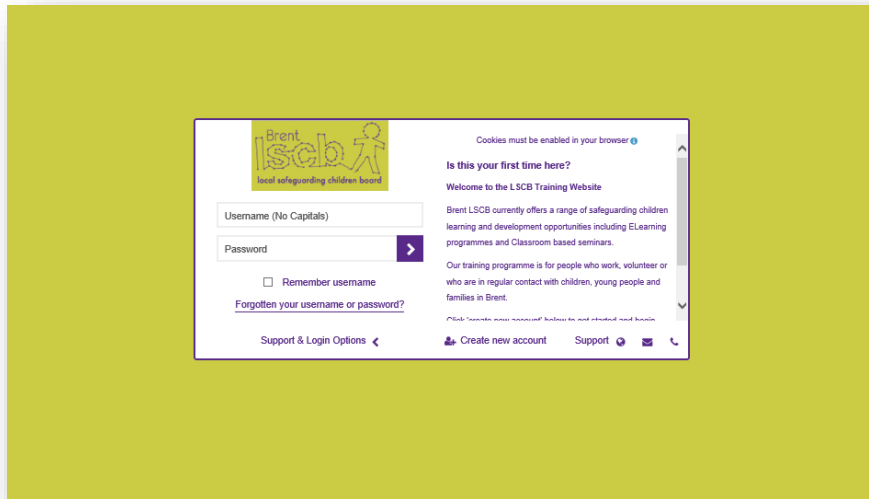


How to guide on accessing e-learning modules

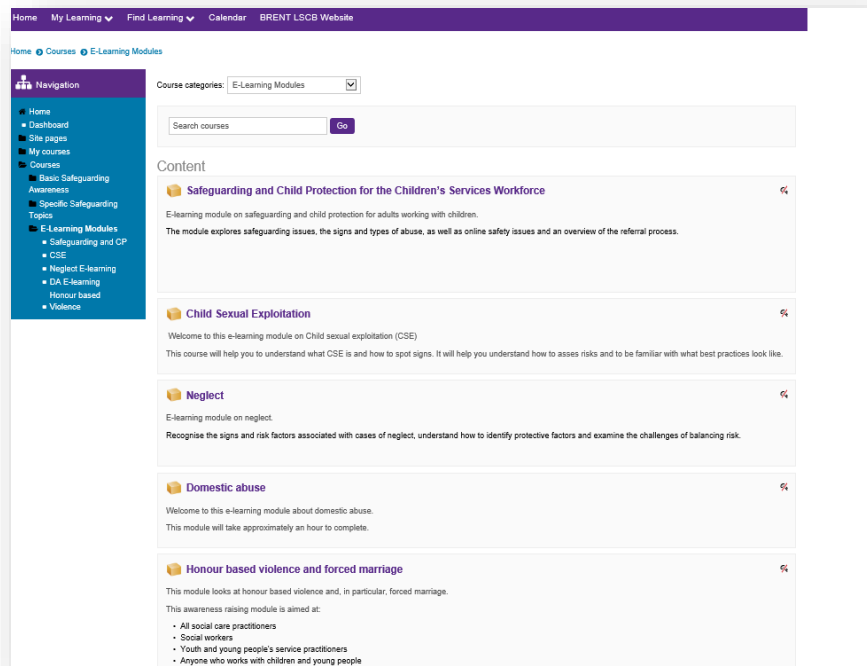
1. To access the site please use the following link: <http://brentlscb.learningpool.com/>
2. The registration screen will appear, please log in with your account details created. If you have not previously registered you will need to click on the "Create new account" button.

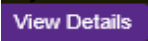


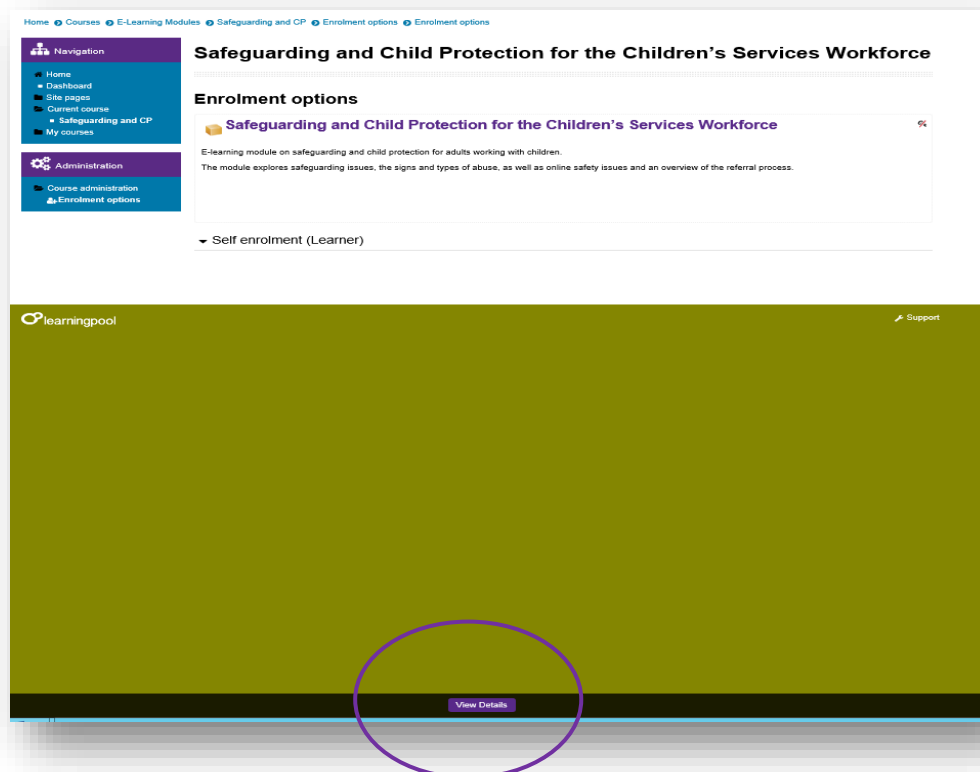
3. Once logged in, you will be greeted with the home page below: Click on the e-learning modules box to access.



4. You will be directed to the catalogue of e-learning modules available, which include a brief summary of each module for your perusal. Once you have decided on a module please click.



5. You are now ready to enrol onto your chosen e-learning module. At the bottom of the page you will see this icon  please click on it to take you to the next screen.



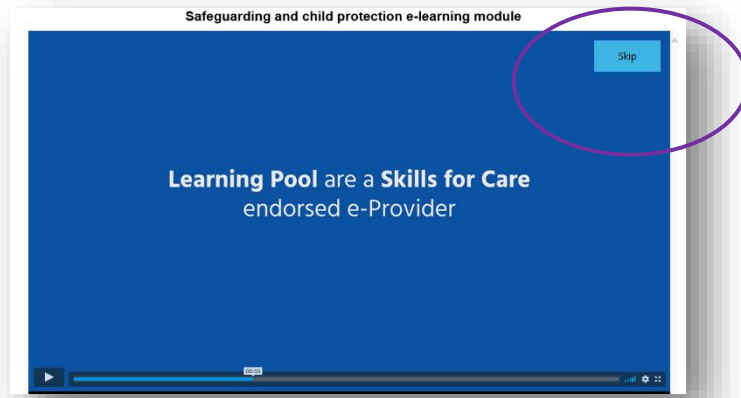
6. Course summary page providing full detailed information on the module.
Please click the link under e-learning.

The screenshot shows a course summary page with a navigation menu on the left. The main content area is titled 'Safeguarding and Child Protection for the Children's Services Workforce'. It includes sections for Summary, E-learning, Evaluation, Certificate, What next?, and Resources & further reading. The 'E-learning' section contains a link to 'Safeguarding and child protection e-learning module', which is circled in purple. The 'Evaluation' section contains a link to 'Evaluation', and the 'Certificate' section contains a link to 'Certificate'. The 'Resources & further reading' section contains a link to 'Brent LSCB resources webpage'.

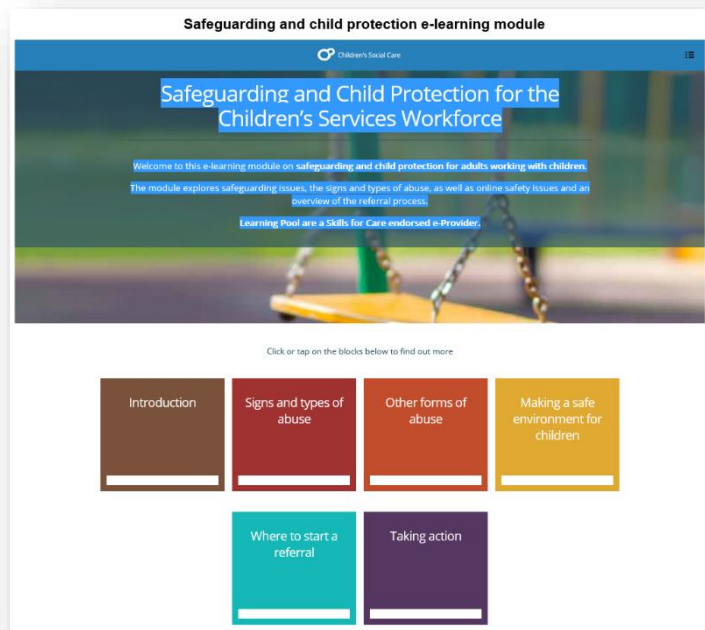
7. The following screen will be displayed on your first log in only. Please click allow once/always allow for this site. Please note once you give access to your computer to allow pop ups from this site, you will not be greeted with this pop up again.

The screenshot shows the same course page as above, but with a message in the center: 'It appears that popup windows are blocked, stopping this SCORM package from playing. Please check your browser settings before trying again.' Below this message is a green bar with the 'learningpool' logo. At the bottom of the page, there is a yellow warning bar from Internet Explorer: 'Internet Explorer blocked a pop-up from brentiscb.learningpool.com.' with buttons for 'Allow once' and 'Options for this site'.

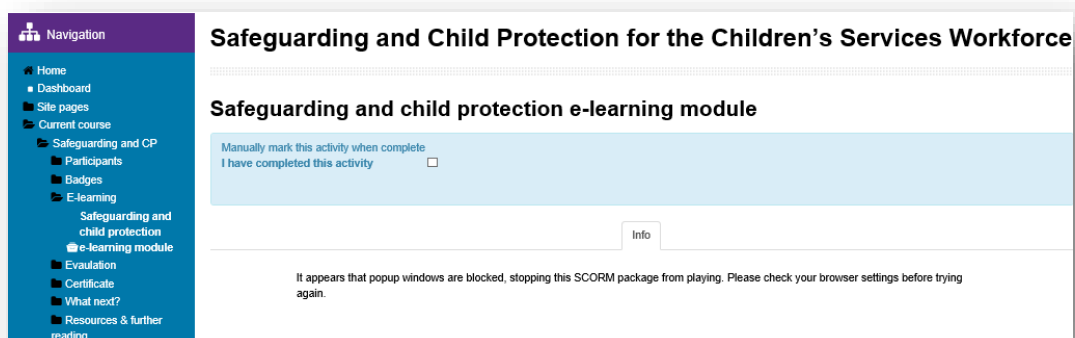
8. A new tab will appear with this advertisement screen, the option to skip is present.



9. You are now enrolled onto your e-learning module, please enjoy.



10. On completion please click the following to mark this module complete and allow you to access the evaluation form and certificate.



If you have any technical issues accessing the e-learning modules please refer to the learning pool support desk who you can call on 0845 0744 114

Many thanks
Brent LSCB