



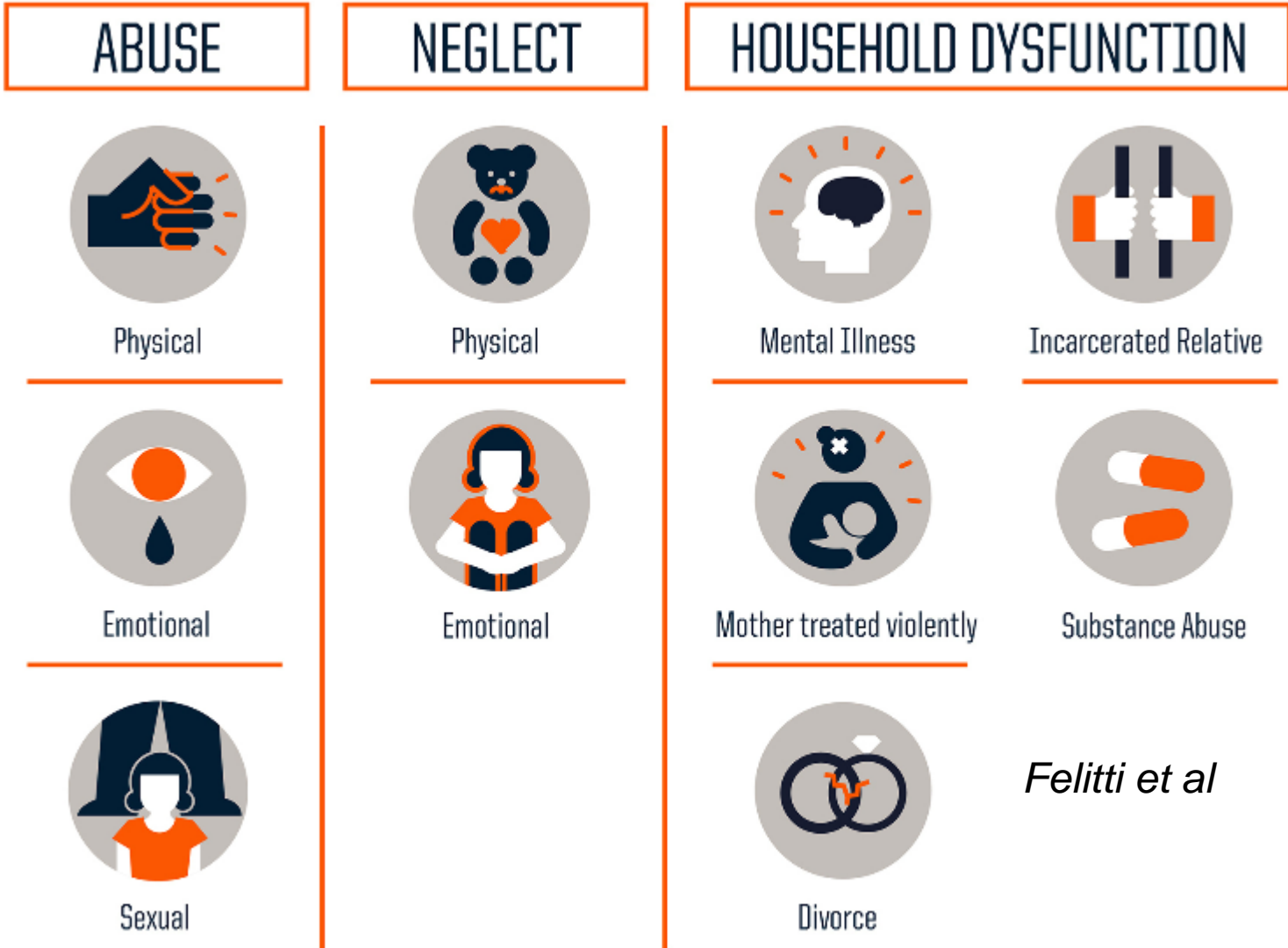
University
of Glasgow | Institute of Health
& Wellbeing

ACEs and Neurodevelopment: lets get together

Helen Minnis

Helen.minnis@glasgow.ac.uk;

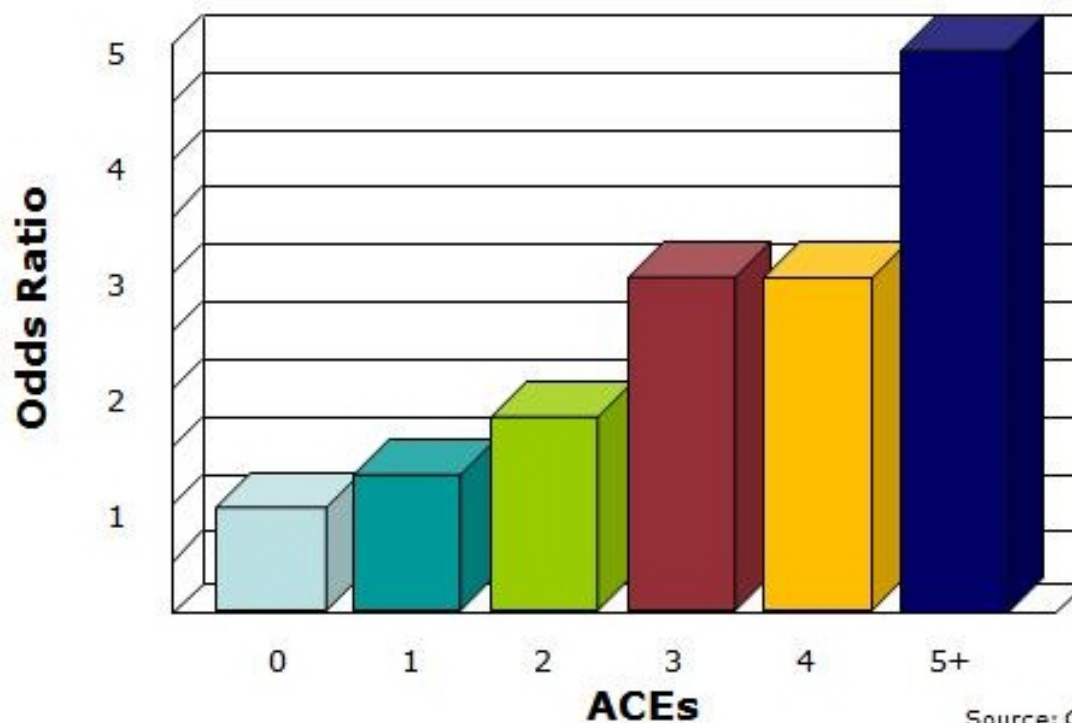






Center on the Developing Child
HARVARD UNIVERSITY

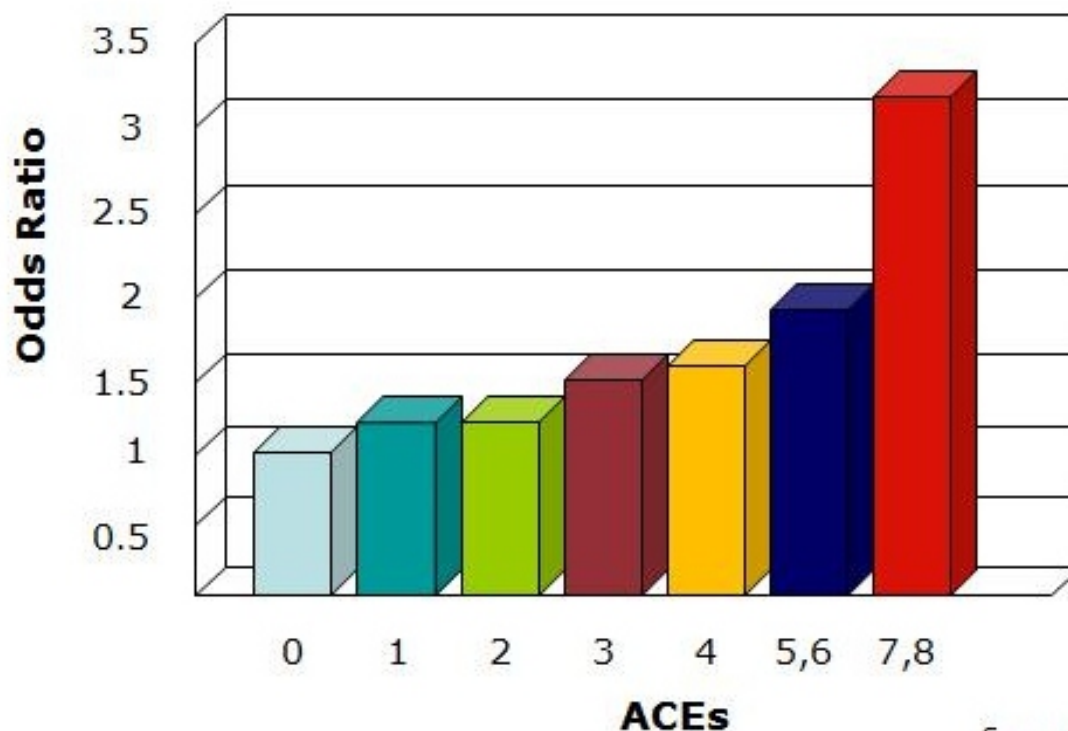
Risk Factors for Adult Depression are Embedded in Adverse Childhood Experiences



Source: Chapman et al, 2004



Risk Factors for Adult Heart Disease are Embedded in Adverse Childhood Experiences





The bigger the child's load, the bigger the risk

BUT...plenty of people with a high ACEs load do well



A quick but crucial tangent...

Video



Video



Video



Video



Abused and neglected children
with psychiatric diagnoses
seem to have LOTS of
diagnoses



Review Article

The Scientific World Journal
Volume 2013, Article ID 148468, 5 pages
<http://dx.doi.org/10.1155/2013/148468>

Maltreatment-Associated Psychiatric Problems: Environmentally Triggered ESSENCE?

Helen Minnis



The ESSENCE concept

Early Symptomatic Syndromes Eliciting
Neurodevelopmental Clinical Examination



Gillberg 2010



The ESSENCE concept



Parents or professionals express concern early on



The ESSENCE concept



Overlap is the norm – not the exception



Do children exposed to maltreatment have an increased neurodevelopmental disorder (NDD) load compared to children not exposed to maltreatment?

The Child and Adolescent Twin Study in Sweden (CATSS)

- $N = 13,052$ (49.6% females) aged 9



- ***Do children exposed to maltreatment have an increased neurodevelopmental disorder (NDD) load compared to children not exposed to maltreatment?***



Maltreated



Not maltreated





We asked about symptoms of:

ADHD

Autism

Tic
disorders

Learning
Disability

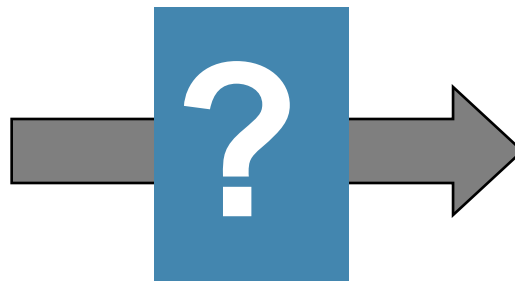
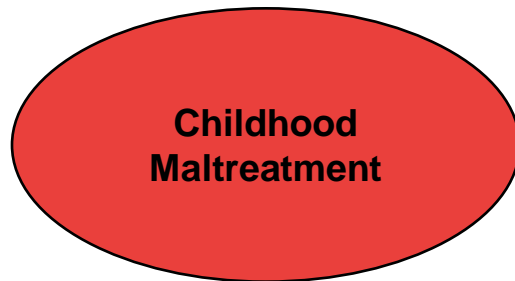


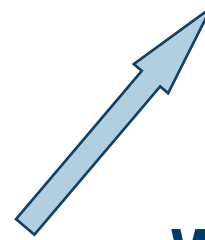
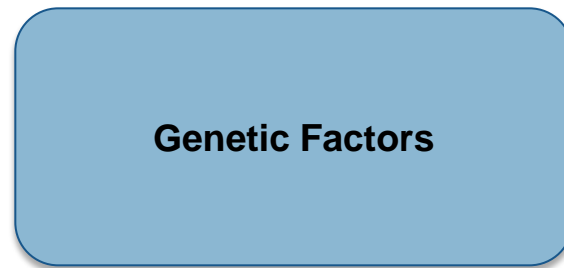
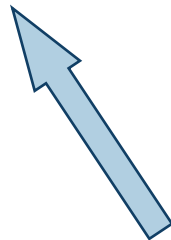
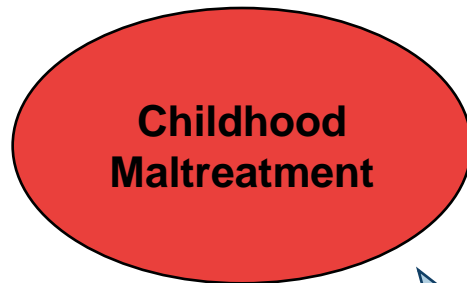
Yes!

*Maltreated children are nearly **ten times** as likely to have 3 or more neurodevelopmental problems*



- ***Is child maltreatment a risk factor for an increased neurodevelopmental load?***





**What are these factors?
Could they be parental
neurodevelopmental
problems?**



Maltreatment-associated neurodevelopmental disorders

Lisa Dinkler,¹



Helen Minnis

Lisa Dinkler



We need to be aware that

1. There is an increased risk of abuse and neglect in children with multiple neurodevelopmental disorders
2. There is an increased risk that abused and neglected children will have (multiple) neurodevelopmental disorders
3. ACEs are not everything
4. Children and adults with a high ACE load **need assessment for neurodevelopmental disorders**

What does this mean in practice?

- Gorgeous wee 7 month old baby in foster care (not this one)
- Referred by a very experienced health visitor
- Strange and worrying spasmodic movements
- Paediatrician said “could this be trauma-related? This baby’s birth mother had problems with substance misuse”
- No – this baby had never suffered any trauma and had been placed from birth with FANTASTIC foster carers
- Referred for an epilepsy assessment
- Not epilepsy – but stereotypies likely related to her neurodevelopmental profile
- Met her again aged 15 months – fantastic little girl. Not to be messed with! Might end up with a neurodevelopmental diagnosis...or just a profile...





What's next?



- Children who have experienced abuse and neglect AND have emotional or behavioural problems **probably need a CAMHS assessment**
- Families with children who have severe/multiple neurodevelopmental problems **need support**
- We need to stop passing these families around, stop arguing and **get around them**

Mental Health in 0-5 year olds coming into foster care in Glasgow



47% had a likely psychiatric diagnosis; most commonly

- Attachment Disorder (35%)
- Separation Anxiety (9%)
- Post Traumatic Stress Disorder (7%)
- Oppositional behaviour (7%)

...that means more than 50% DID NOT have a psychiatric disorder

...those with a diagnosis often had more than one





Over to Udit...