



Bromley Safeguarding
Children Partnership

**MULTI-AGENCY STRATEGY DISCUSSION/ MEETING
PROTOCOL**

November 2025

www.bromleysafeguarding.org

The purpose of this protocol is to set out the shared responsibility for undertaking multi-agency Strategy Meetings/Discussions in Bromley. The principles of this protocol are based on the requirements as set out in the [London Safeguarding Children Procedures and Practice Guidance](#) and [Working Together 2023](#).

Table of Contents

Strategy Discussions/Meetings in Bromley – the fundamentals	3
Convening a Strategy Discussion/ Meeting in Bromley: decision making and who to invite	4
<u>Children Social Care’s responsibilities in convening Strategy Discussions</u>	4
<u>Police</u>	5
<u>Health</u>	5
<u>Other relevant agencies</u>	7
<u>Expectations of each agency at Strategy Meetings/Discussions</u>	9
<u>Purpose of Strategy Meetings/Discussions</u>	10
<u>Flowchart – possible actions following a Strategy Meeting/Discussion</u>	13
Appendices	14
Appendix 1: <u>Contacts to use when convening a Strategy Meeting/Discussion in Bromley</u>	14
Appendix 2: <u>Immediate Protection of a child flowchart</u>	17
Appendix 3: <u>Links to relevant guidance and procedures</u>	18
Appendix 4: <u>Referral forms for police (87a) and for community paediatricians (BHC)</u>	19
Appendix 5: <u>Children/young people missing from care or home</u>	20
Appendix 6: <u>Complex Strategy Meetings for multiple children at risk of exploitation</u>	22
Appendix 7: <u>Information gathering/sharing from Adult Mental Health Services</u>	23
Appendix 8: <u>Contacts for Out of Borough School Nurse teams</u>	24
Appendix 9: <u>Quick Guide for Social Worker on who to invite from the health economy to a Strategy Meeting</u>	25

Strategy Discussions and Meetings in Bromley – The Fundamentals

Whenever there is reasonable cause to suspect that a child is suffering, or is likely to suffer, significant harm, there should be a Strategy Meeting/ Discussion.

This protocol highlights the importance of joint working practices and the shared responsibilities of Children's Social Care (CSC), the Police, Health and other partner agencies to work together to safeguard children.

In the initial stages of an enquiry the sharing of information, the quality of the communication and the willingness to jointly respond are essential in deciding how child protection enquiries should be conducted. Enquiries must be child focused as well as addressing the parallel priorities of agencies.

It is appreciated that it is not possible for protocols to cover all eventualities. The overriding principle must be safeguarding children and compliance with the law and good practice guidance and in consideration of each agency's own child protection procedures.

The terms 'Strategy Discussion' and 'Strategy Meeting' are used interchangeably. There is not a two-tier system of meetings. Professionals often refer to these meetings/discussions as 'Strats'.

A Strategy Meeting/ Discussion can take place following a referral or at any other time, including during the assessment process and when new information is received on an already open case.

More than one Strategy Meeting/Discussion may be required. Reconvening a Strategy Discussion should not be a routine process and, if reconvened, there should be a clear rationale for doing so. Reconvened meetings must be timely and the attendance requirements remain the same as for the first meeting. Usually, the need for a further Strategy Meeting/Discussion is considered at the initial meeting, especially when further information is needed. The date to reconvene should be decided at this meeting and should be set for the shortest possible timeframe. For example, in cases of suspected non-accidental injuries in children, a further Strategy Meeting/Discussion may be required to consider results of the medical investigations. In cases of a missing child/young person, further Strategy Meeting/Discussions may be required until they are found¹.

Where there is professional disagreement about Strategy Discussions/Meetings, the BSCP Escalation Procedure should be followed. This can be found on the BSCP website under '[Policies and Procedures](#)'.

This Protocol complements the [London Safeguarding Children Procedures](#) with local Bromley contact information and incorporates lessons learnt from local audits and reviews.

¹ See Appendix 5 for specific additional guidance on children/young people missing from care.

1. CONVENING A STRATEGY DISCUSSION/ MEETING IN BROMLEY: Decision Making, Who to Invite and Timing

a. Children's Social Care

A Children's Social Care Team Manager or Group Manager will decide whether a Strategy Meeting/Discussion will take place². The decision may be based on a recommendation from the Children & Families Hub Manager or other professional, depending on where the current concern has arisen.

Children's Social Care is responsible for co-ordinating and chairing the Strategy Meeting/Discussion.

When a re-referral about a child or family is received all the history must be reviewed in the light of the new information & any specific concern, not just the information gathered since a previous contact. The Strategy Discussion should include a review of all the relevant information gathered as part of the Triage process, including where the C&F Hub recommends that the Strategy Meeting should consider a specific issue.

When convening a Strategy Meeting/Discussion, Working Together 2023 states who must be invited "A local authority social worker, health practitioners and a police representative should, as a minimum, be involved in the strategy discussion. Other relevant practitioners will depend on the nature of the individual case."

The referrer should where possible be invited to the strategy meeting especially if they are a professional such as GP. Where children are of school age, the relevant education professionals should always be invited, even during school holidays.

The invitation should make clear that the meeting is a Strategy Discussion/ Meeting and not be called a 'multi-agency meeting' or 'professionals meeting' as this causes confusion.

TIMING: The decision on when to hold the Strategy Meeting/ Discussion should be made in line with risk and need rather than based on availability of the professional network. Strategy meetings / discussions should be convened within three working days of child protection concerns being identified, except in the following circumstances:

- For allegations / concerns indicating a serious risk of harm to the child (e.g. serious physical injury or serious neglect) the strategy meeting / discussion should be held on the same day as the receipt of the referral;
- For allegations of penetrative sexual abuse, the strategy meeting / discussion should be held on the same day as the receipt of the referral if this is required to ensure forensic evidence;
- Where immediate action was required by either agency, the strategy meeting / discussion must be held within one working day;

² Or Head of Service for complex Strategy Discussions involving exploitation – see Appendix 6.

- Where the concerns are particularly complex (e.g. organised abuse / allegations against staff) the strategy meeting / discussion must be held within a maximum of five working days, but sooner if there is a need to provide immediate protection to a child.

In Bromley, we always aim to convene a Strategy Meeting/Discussion within 24 hours of child protection concerns that may meet the Section 47 threshold as this represents best practice in planning actions that may need to be undertaken to safeguard children.

Sometimes it is necessary to hold a Strategy Meeting/Discussion at extremely short notice when the risks to the child are too great to wait until the next day. It is acknowledged that these are very difficult for professionals to attend so social workers will only do this when absolutely necessary and this practice must not be routine.

b. Police

The allocated social worker or responsible CSC manager will contact the Police Single Front Door³ to organise the Strategy Discussion/Meeting. The single point of access for Strategy requests to the police includes the following teams in Bromley: CAIT (familial child abuse), CSE/CCE, Missing, Gangs, Online Indecent Image Abuse, Community Safety Unit, CID and SAPPHIRE.

Form 87A⁴ must be sent to:

SNMailbox-PublicProtectionReferrals@met.police.uk

If the referrer needs to speak to the police SPOC referrals staff they should send an email requesting a call back or add that request to the 87A on submission.

If the social worker knows the name of the police officer involved in the case, this should be stated with the request.

South BCU operates a live calendar showing available slots for attendance at Strategy Meetings. Social Workers should obtain the link to this from their Manager.

For out of hours emergency Strategy Discussions (after 5pm), contact the South BCU Operations Room on SNMailbox.OperationsRoom@met.police.uk (this mailbox is supervised 24/7) and copy in SNMailbox-PublicProtectionReferrals@met.police.uk

In the case of missing children/young people, additional police forces other than Metropolitan Police Service South BCU, will need to be included if the child has gone missing from a care placement outside Bromley⁵.

c. Health

To be able to fully assess the safeguarding risk of the child (and family), it is important that all sources of information can be represented at the Strat meetings. Knowledge of all sources of information will ensure the appropriate safeguard measures are put in place. It is therefore important that the most appropriate health professional or professionals attend Strategy Meetings/Discussions, particularly because not all Healthcare Professionals will have access to the same clinical information. For example, a 'Strat' for a family with an under five and a pregnant mother with concerns about domestic abuse would have to include the Health Visiting Service (Bromley Healthcare) and Midwifery (the hospital where mother is receiving antenatal care). The health visitor has no access to the maternity records and vice versa, as they are in different organisations.

³ This covers Bromley, Croydon and Sutton boroughs. Operational 9am – 5pm.

⁴ A copy is included in Appendix 4. Form 87A was updated in November 2025.

⁵ See Appendix 5 for specific guidance about Strategy Meetings for Children Looked After who are missing.

➤ **HOW DO I KNOW WHO TO INVITE FROM THE HEALTH ECONOMY?**

In the request for a Strategy Meeting, it must be clear whom the Strategy Meeting/ Discussion is for, with full names and DOB and schools and what the presenting safeguarding issues are.

• **If the child is in hospital:**

For children in hospital, the Paediatric Consultant responsible for the child's care at the relevant hospital should be invited to the Strategy Meeting. The hospital's Safeguarding Team will assist you if you don't already have the paediatrician contact details as part of the referral. There is always a paediatrician on duty 24/7.

Contact details for the Safeguarding Team at our local hospital, the PRUH (Princess Royal University Hospital) at Farnborough and Kings Denmark Hill site, both run by Kings College Hospital is

kch-tr.safeguardingchildren@nhs.net or call 0203 299 1187.

If out of hours, contact Switchboard and ask for 'Paediatrician on duty'.

PRUH: 01689 863000 (Ext 64186), (or Bleep 440), or via the Paediatrics Ward at 01689 864404/01.

Denmark Hill: 020 3299 9000 and ask for 'Paediatrician on duty'.

Out of Area hospitals:

Croydon University Hospital switchboard Tel: 020 8401 3000

University Hospital Lewisham switchboard 0203 300 3000

Queen Elizabeth Hospital, Woolwich switchboard 0208 836 6000

Working Together states that if the child is receiving services from a hospital or child development team, the meeting / discussion should involve the responsible medical consultant and, in the case of in-patient treatment, a senior ward nurse.

Be aware of other siblings/other children who may also be at risk. The hospital paediatrician will only make decisions about the child currently in hospital so you may need to invite additional health professionals.

• **If the child is not in hospital:**

For all community health professionals such as Community Paediatrician, Health visitors 0-5, school nurses 5-19, community allied health professionals and Family Nurse Partnerships, the 87a and invite should be sent to

Bromh.safeguardingchildren@nhs.net and no one else from community health copied in

The health safeguarding advisor on duty in the Hub will triage and forward the 87a (this should contain all names, DOB and schools and reason for the strategy meeting) and invite to the most appropriate community health representative(s). That service will then accept the invite. Ideally the 87a and invite should be sent through at the same time.

Unless the safeguarding team are attending themselves, they will decline the invite and will respond to say who will be attending.

If a Community Paediatrician is required, the safeguarding advisor will liaise with them, the Community Paediatrician will then liaise with the SW directly for any further info as required.

The community health practitioner that attends the Strategy Meeting will attend for the whole family - so that is all the children 0-19 and parent/ carers as they have access to all this community health Intelligence.

In the triage process, if it is felt a more appropriate health professional than someone from community health [Bromley Healthcare (BHC)] is required, the BHC Safeguarding Advisor on duty will advise the SW of this and the SW will be directed to the GP/ Oxleas MH/ out of area School Nursing team, midwives, private practitioner etc and wherever possible email addresses will be shared. It is important that in emergency situations, this does not delay a Strategy Meeting taking place.

A note on Community Paediatricians

Where issues have significant medical implications (e.g. child sexual abuse - CSA, anal warts, physical injury, severe neglect, female genital mutilation, fabricated/ induced illness), or a Paediatric Examination has already taken place or may be necessary (because of significant physical harm or neglect), then a Community Paediatrician should always be included in the Strategy Discussion. This is stipulated in Working Together.

Attendees should be familiar with the [Bromley Standard Operating Procedure for Child Protection Medicals.](#)

- **If the child is unborn or a neonate:**

The midwifery safeguarding team at whichever hospital Mother is booked in should be invited to the Strategy Meeting. See page 7 for local hospital contact numbers.

- **Where a case is already open to CSC**

If the case is open and the BHC professional is already known to the SW, invites will still be triaged by the Safeguarding Team Bromh.safeguardingchildren@nhs.net

If the family are known to Oxleas / CAMHS/ Midwifery, please email them directly using the details on CSC records. Copying in the generic team email will ensure the team is

aware if the specific professional is on leave. See appendix 1 for a list of generic team emails.

- **For missing Children Looked After**, the CLA Nursing Team should also be invited to the Strategy Discussion/Meeting⁶.

bromh.childrenlookedafter@nhs.net

If there is any doubt which health professionals should be invited, send the 87a Form to Bromh.safeguardingchildren@nhs.net to ask for support.

d. Other relevant agencies/professionals

The allocated social worker or responsible CSC manager must invite other relevant agency / professionals to participate in the Strategy Discussion- whoever holds information relevant to the concerns about the child. This could be:

- the child's nursery/ school/ college and/or an out of school setting
- the early intervention service currently/recently engaging with the family
- residential or fostering service if the child is looked after
- youth justice practitioner and/or youth worker
- British Transport Police
- Think Family - For cases where adult services are working with and supporting parents / carers, invites should be extended to those agencies too. This could be Adult Mental Health (see appendix 7), adult substance misuse service, or domestic abuse service specialist.
- Expertise - A professional may also need to be included in the strategy meeting / discussion who is not involved with the child, but who can contribute expertise relevant to the particular form of abuse or neglect in the case.

If the referrer is a professional, they should always be invited to a Strategy Meeting/Discussion.

See Appendix 8 for a quick guide for social workers to use as a prompt for who to invite to a Strategy Meeting.

⁶ See Appendix 5 for specific guidance about Strategy Meetings for Children Looked After who are missing.

2. Strategy Discussions/ Meetings- EXPECTATIONS of each agency

The Government's expectations of social workers, health practitioners and the police attending a Strategy Discussion/ Meeting are clearly set out in [Working Together 2023 \(chapter 1\)](#). The absence of police or health colleagues makes a Strategy Meeting/ Discussion inquorate. Where either of these professionals are unable to attend within the timeframes set out by Working Together reasons for non-attendance should be clearly recorded and escalated to senior managers.

Working Together 2023 is clear that Strategy Discussions/Meetings are for decision making and not simply information sharing. Each agency has a responsibility in this regard and all attendees should be sufficiently senior to make decisions on behalf of their organisation and agencies.

Referrers (professionals) will be invited to the Strategy Discussion/Meeting to participate in the safeguarding process. Where possible, attendance of the meeting should be considered as part of a Duty of Care to the safeguarding process.

Additional expectations for all agencies in Bromley are:

- It is important that all invited partner agencies fully participate in the Strategy Meeting/ Discussion to ensure that there is good quality information sharing and timely decision making between partner agencies. At times, children / young people will need immediate safeguarding and Strategy Meetings/Discussions are convened at very short notice⁷. This will impact on how much research is completed prior to the meeting. All professionals should endeavor to share as much information as possible .and provide fuller information as soon as possible after the meeting.
- Where professionals are unable to attend in person or join virtually, agencies must share their concerns with the Team Manager leading the Strategy Discussion/ Meeting so it can be shared in the meeting and acted on. Ideally, communication will be a written report about the information they hold or wish to be taken into account.
- All participants contributing to the Strategy Discussion/Meeting are expected to bring relevant family history, curiosity and challenge to the discussion. This will ensure that a robust plan of action is formed with the welfare of the child at its centre.
- Strategy Discussions should include a review of all the relevant information gathered as part of the Triage process, including where the C&F Hub recommends that the Strategy Meeting should consider a specific issue. This is particularly important when a re-referral about a child or family is received - all the history must be reviewed in the light of the new information & any specific concern, not just the information gathered since a previous contact.

⁷ See Appendix 3 – Immediate Response, taken from Working Together 2023.

- All participants of a Strategy Discussion/Meeting should be sufficiently senior to make decisions on behalf of their agencies.
- The Strategy Discussion/Meeting participants will make decisions based on multi-agency information. This will include decisions about the immediate and short-term action to be taken to safeguard the child/ren or young person. It is for this reason that participation in Strategy Discussion/Meetings is so important – no agency can afford to wait until the ICPC to share information. All Strategy Meetings/ Discussions should conclude with an interim safety plan.
- All children within the household should be considered as part of the Strategy Meeting/Discussion, even if the concerns only relate to one child.
- Each agency must use their own expert skills regarding how the investigation should proceed but this does not absolve all other attendees from covering the essential components.
- Where a decision is made that an Initial Child Protection Conference (ICPC) is required, the referral to the Bromley Quality Improvement Service must take place within 24 hours of the decision being made. The QI service will set up a date for the ICPC within 15 working days of the decision.
- It is the responsibility of the Chair of the Strategy Meeting / Discussion to ensure that the decisions and agreed actions are fully recorded. All agencies attending should take notes of the actions agreed at the time of the meeting/discussion. A copy of the Strategy Meeting / Discussion record should be made available for all those who had been invited, within 24 working hours of the meeting by CSC. The record must be saved by CSC on the electronic case system (Liquid Logic).
- All agencies attending should record when the Strategy Discussion/Meeting took place and what the agreed actions and decisions were, on their own case recording system.
- A Strategy Meeting in person rather than an online call should take place for more serious/complex concerns⁸.
- Where there is an allegation that a child has abused another child - separate Strategy Meetings should be held for each child. Different workers in different teams should be allocated to ensure there is no conflict of interest.

⁸ London Safeguarding Children Procedures state face to face meetings are likely to be more effective where:

- There is concern that the child is suffering complex types of neglect or maltreatment (see [Fabricated or Induced Illness](#) and [Organised and Complex Abuse](#));
- There is an allegation that a child has abused another child (see [Harmful Behaviours](#)). Different social workers should be allocated for the child who is the victim and the child who has harmed;
- There are concerns about extrafamilial risk
- There are ongoing, cumulative concerns about the child's welfare and a need to share concerns and agree a course of action;
- There are concerns about the future risk of harm to an unborn child.

This list is not exhaustive.

2. A Strategy Meeting / Discussion should be used to:

- Share available information
- Agree the conduct and timing of any criminal investigation
- Decide whether an assessment under S.47 of the Children Act 1989 (S.47 enquiries) should be initiated or continued if it has already begun. Consider, if appropriate, if a LADO referral is required which will be made by the SW.

Where it **is** decided that there are grounds to initiate a S.47 enquiry under Children's Act 1989:

- A decision must be made whether this is a Single or Joint Investigation. In cases where a Single Agency investigation is agreed the reasons why the Police are not jointly investigating the concerns should be clearly recorded by CSC and Police.
- Consider the assessment and the action points, if already in place.
- Plan how the s47 enquiry⁹ should be undertaken, including the need for medical treatment, and who will carry out what actions, by when and for what purpose and whether a social media search should be conducted.
- Agree what action is required immediately to safeguard and promote the welfare of the child, and / or provide interim services and support. For example, if the child is in hospital, decisions should also be made about how to secure the safe discharge of the child; or if an Emergency Protection Order is in place or the child is subject to Police Powers of Protection who will do what, by when.
- Determine what information from the Strategy Meeting / Discussion will be shared with the family, unless such information sharing may place a child at increased risk of significant harm or jeopardise police investigations into any alleged offence/s. The reasons for not informing the parents must be clearly recorded by the Chair.
- Determine if legal action is required.
- Agree who should be interviewed, by whom, for what purpose and when. The way in which interviews are conducted can play a significant part in minimising any distress caused to

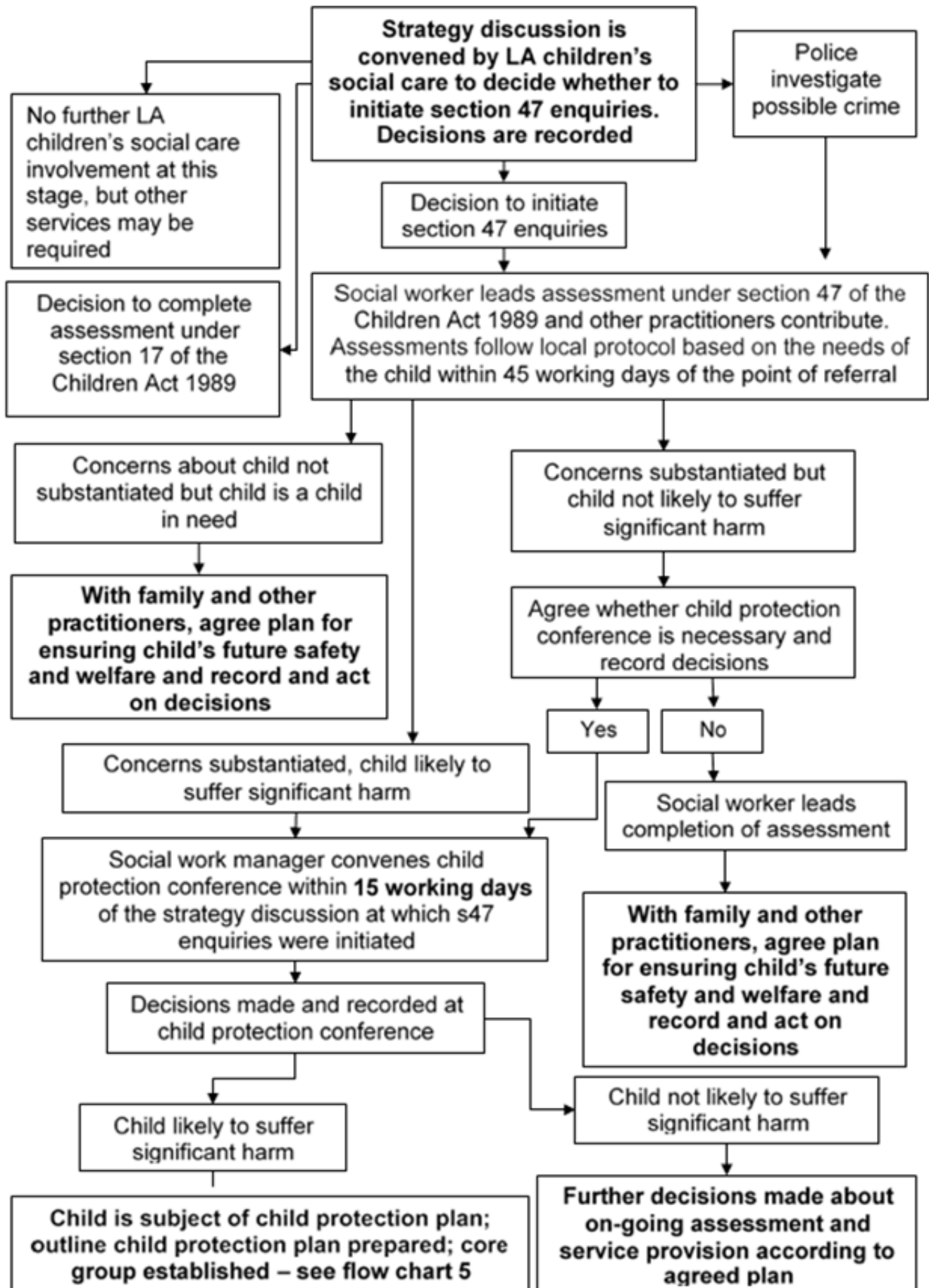
⁹ Local Authority social workers have a statutory duty to lead enquiries under section 47 of the Children Act 1989. The police, health professionals, teachers and other relevant professionals should support the Local Authority in undertaking its enquiries. A multi-agency assessment is the means by which Section 47 Enquiries are carried out. The assessment will have commenced at the point of receipt of referral and it must continue whenever the criteria for Section 47 Enquiries are satisfied. The conclusions and recommendations of the Section 47 Enquiry should inform the assessment which must be completed within 45 working days of the date when the referral was received. The timeframe for the completion of the assessment will be set by the responsible CSC Team Manager, who will also consider and make decisions about how the assessment under S. 47 will be carried out, what further information is required about the child/ren and family and how it should be obtained and recorded.

children, and in increasing the likelihood of maintaining constructive working relationships with families when a criminal offence may have been committed against a child. The timing and handling of interviews with victims, their families and witnesses can have important implications for the collection and preservation of evidence. It is good practice for the social worker to attend Achieving Best Evidence/Visually Recorded (ABE/VRI) interviews¹⁰.

- Agree when the child will be seen alone (unless to do so would be inappropriate for the child) by the Social Worker during the course of these enquiries and consider the methods by which the child's wishes and feelings will be ascertained so that they can be taken into account when making decisions under s.47.
- Take account of the child's gender identity, age, sexuality, ability/disability and culture as well as the child and family's language, race, ethnicity and religion. Establish whether an interpreter will be required.
- Consider the needs of other children who may be affected (e.g. siblings and other children, such as those living in the same establishment, in contact with alleged abusers, subject to the same extra-familial risk).

The following flowchart (flowchart 4 from Working Together 2023) shows the possible actions following a Strategy Discussion/ Meeting.

¹⁰ [CP3. Child Protection s47 Enquiries](#) section 9, Visually Recorded Interviews/ABE



Appendix 1: Contacts to use when convening Strategy Meetings/ Discussions in Bromley

The generic team emails below should be used when requesting attendance at a Strategy Meeting/Discussion as the specific professional involved with a child/family may be unavailable on the day in question. Generic team emails are checked Monday to Friday, 9am to 5pm. Attendance cover can be arranged, and records can be checked by whoever is on duty that day. Where they exist, out of hours contact details are also included below.

<u>ORGANISATION and TEAM</u>	<u>CONTACT DETAILS</u>
<u>Police</u>	
Single triage front desk (for all Bromley police Strategy requests) 9am – 5pm	SNMailbox-.PublicProtectionReferrals@met.police.uk
Out of Hours SN BCU Police Operations Room (5pm – 9am) for emergency Strategy Discussions overnight	SNMailbox.OperationsRoom@Met.police.uk Also copy in: SNMailbox-.PublicProtectionReferrals@met.police.uk
<u>Bromley Healthcare</u>	
BHC Safeguarding team	Bromh.safeguardingchildren@nhs.net
Community Paediatricians	07864 949 564 or 0208 466 8800
BHC Children Looked after team	bromh.childrenlookedafter@nhs.net
<u>Oxleas</u>	
CAMHS	oxl-tr.Bromleycamhsadmin@nhs.net
Perinatal Mental Health Service	oxl-tr.oxleasperinatalmentalservice@nhs.net
Adult Mental Health Services	Where referral is for parental mental health: oxl-tr.igteam@nhs.net <i>See flowchart appendix 6 for information gathering from Adult Mental Health Services.</i> If in doubt of who to invite, contact the Oxleas Safeguarding Team oxl-tr.safeguardingchildren@nhs.net

Kings College Hospital NHS Trust for Princess Royal University Hospital (PRUH) and Denmark Hill

Kings Safeguarding Team to find out which hospital paediatrician to contact if unknown

kch-tr.safeguardingchildren@nhs.net

0203 2991187

Out of hours, contact Switchboard and ask for Paediatrician on duty.

PRUH: 01689 863000 (Ext 64186), (or Bleep 440), or via the Paediatrics Ward at 01689 864404/01.

Denmark Hill: 020 3299 9000

Bromley Sexual Health Services

kch-tr.SexualHealthSHIP-Team@nhs.net

01689 866 622

GPs

All social work teams hold a list of GP contact information which is updated regularly. Where a GP is not known, the Duty GP can be contacted for input although they may not be available immediately.

If GP is not known, this can be checked on the NHS Spine by Bromley Healthcare's Safeguarding Team

Bromh.safeguardingchildren@nhs.net

This team can also access EMIS to see GP patient records.

Urgent Care Centres/Urgent Treatment Centres

Urgent Care Centres at Beckenham Beacon and the PRUH

The Safeguarding Team can be contacted if you do not know the doctor's contact details

p hl.safeguarding@nhs.net

Substance Misuse Services

Change Grow Live (Bromley Drug and Alcohol Services – BDAS, and Bromley Changes, the YP service)

Shared mailbox for general enquiries is referrals.bromley@cgl.org.uk

To send confidential information, the secure shared mailbox is admin.bromley@cgl.cjsm.net

Education

Schools/academies/colleges

A directory of all schools and colleges in Bromley is maintained by the LA (updated termly). This is published on the Education Matters website www.bromleyeducationmatters.uk and the council website www.bromley.gov.uk

Each school's office email, office phone number and headteacher's name is included.

Local Authority Education Welfare Team (EWS)

Education.welfare@bromley.gov.uk

020 8313 4322

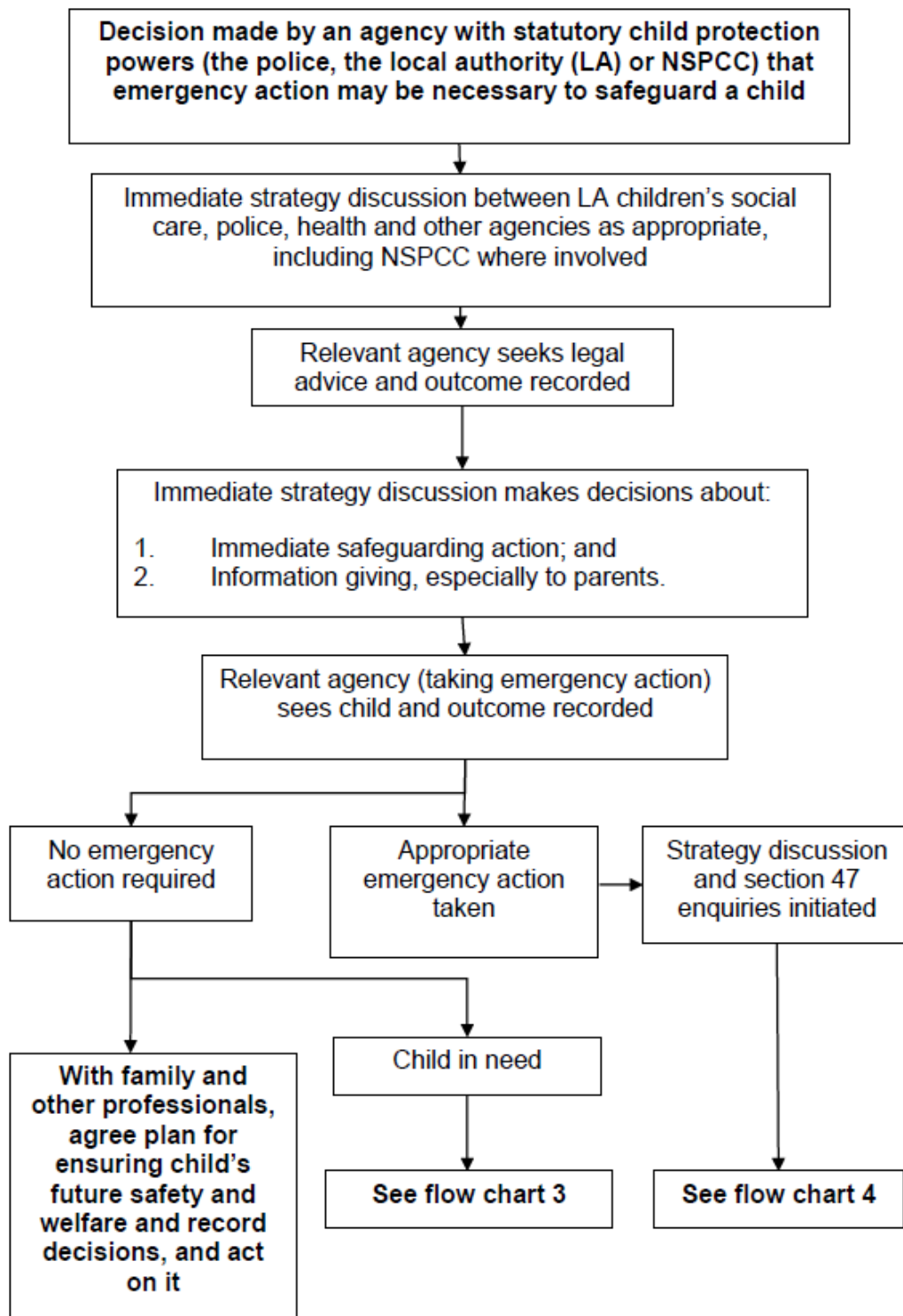
EWS has access to systems checking current school attendance and school admissions information. The EWS C&F Hub worker has access to databases checking addresses.

Out of Area Hospital Switchboards

Croydon University Hospital switchboard	020 8401 3000
Queen Elizabeth Hospital, Woolwich switchboard	0208 836 6000
University Hospital Lewisham switchboard	0203 300 3000

Appendix 2: Immediate Protection

Where there is a risk to the life of a child or a likelihood of serious immediate harm, local authority social workers, the police or NSPCC should use their statutory child protection powers to act immediately to secure the safety of the child. [Working Together 2023 \(chapter 1\)](#) gives clear guidance on this and it is not duplicated here. Practitioners must be aware that Immediate Strategy Discussions are sometimes required. WT flowchart 2:



Appendix 3: Links to key guidance and procedures

London Safeguarding Children Procedures and Thresholds of Needs

<https://www.londonsafeguardingchildrenprocedures.co.uk>

Working Together to Safeguard Children

<http://www.workingtogetheronline.co.uk/index.html>

Bromley Procedures online (Bromley Council Staff Only) on TriX

<http://bromleychildcare.proceduresonline.com/index.html>

London Child Exploitation Protocol

This pan-[London Child Exploitation Strategy](#) provides pan-London framework for multi-agency responses, intelligence sharing, and disruption planning.

Safeguarding Adolescence in London (SAIL)

Emphasises adolescent-specific safeguarding, contextual safeguarding, and trauma-informed practice.
New version due end Nov 2025

Children Act 1989 – Section 47

Appendix 4: Local referral form to Police and Health Triage in Hub (Bromley Healthcare)

It is anticipated that these forms will be incorporated as electronic forms on Liquid Logic shortly. In the meantime, please use these Word versions.

Appendix 4a: Form 87A



Form 87A - Oct
2025.docx

The new 87A form was launched by Metropolitan Police Service in November 2025 and should be used with immediate effect.

Appendix 5 : Children Missing from Care or Home

Children missing from care or home will be the subject of a Strategy Meeting to plan actions to be undertaken to seek the return of a young person and prevent further episodes of missing from care or home.

As soon as notification of a missing child is received, the CSC Team Manager should make same day enquiries with police as to immediate actions needed to locate the child. All missing children notifications and information must be shared with Missing.Children@bromley.gov.uk

A Strategy Meeting is convened within 72 hours of a child being reported missing and the meeting follows the procedure as set out in the [London Safeguarding Children Procedures Practice Guidance for Children Missing from Care, Home and Education](#) The overarching principles for all agencies, including the Metropolitan Police Service (MPS) as the lead agency in seeking the recovery of the child, are:

- The safety and welfare of the child is paramount
- Locating and returning the child to a safe environment is the main objective
- Child Protection procedures may be initiated whenever there are concerns that a child who is missing may have suffered, or is likely to suffer, significant harm.

It is recommended the Strategy Meeting goes ahead even when the child has returned to consider the risks to the young person that may have occurred during the missing period.

For Children in Care

In Bromley, we report all our children in care as missing if they are not where they are expected to be (e.g. not returned by curfew). We do not record children as absent on an unauthorised basis, as significant harm and risk can apply during the shortest time period as well as during longer absences from care or home.

The Strategy Meeting should include police, CSC, the placement provider, CLA health team and the virtual school. The Atlas Data Analyst should be informed by CSC about the Strategy Meeting in order to capture relevant data.

For children missing from care, this procedure can be complicated by the need to involve different Police forces and the involvement on occasions of multiple parts of the Metropolitan Police Service. There may be a process of multiple strategy meetings rather than the commencement of S47 enquiries, and this needs the consistent attendance of a named Police Officer who will coordinate intelligence and information across different parts of the MPS.

MOPAC's [Protocol for Reducing Criminalisation of Looked After Children and Care Leavers](#) (2021), which includes the Philomena Protocol, sets out in Chapter 12 the pre-emptive actions expected to be taken by care homes in relation to children with a history of going missing and what to do when those children fail to return to the care home when expected.

For all children missing

Young people who have a pattern of repeat missing episodes or where there are concerns of criminal and/or sexual exploitation should be referred to Bromley MEGA panel.

If there are concerns identified related to the missing episode with regard to trafficking (possibly with links to criminal exploitation and 'county lines' activities), a referral to the National Referral Mechanism should be considered.

If the young person remains missing for more than 7 days there is an escalation in seniority of staff chairing the meeting to the CSC Head of Service to reflect the level of concern around the missing period.

Young people who repeatedly go missing should have a trigger plan agreed with police colleagues which includes a photo, all information related to known associates, phone details, Oyster/Zip card details and family contacts.

Once the missing episode has been concluded, the young person will be offered a return home interview (RHI). Any RHI intelligence gathered shared with the relevant social worker and recorded on Liquid Logic. Any RHI's should be emailed to the Police Missing Persons Team and a Merlin put on. Trigger plans should also be sent to this team so a CRIMINT can be completed.

The BSCP Missing from Care or Home Protocol includes a flowchart explaining the steps from when a child/young person is reporting missing to RHI stage.

Appendix 6 : Chairing Complex Strategy Meetings for Children at Risk of Exploitation

Scope

- All cases involving child sexual exploitation (CSE), child criminal exploitation (CCE), trafficking, or other forms of harm outside the home, meeting Tier 4 thresholds for statutory intervention.
- Situations requiring multi-agency strategy discussions beyond standard Section 47 enquiries due to complexity, cross-borough issues, or organised networks.

Chairing Responsibility

A Head of Service (or above) from Children's Social Care will chair complex Strategy Meetings. This can be delegated to a Group Manager identified by Head of Service.

Disputes regarding chairing should be referred to the Assistant Director for Children's Social Care as per the BSCP Escalation Procedure (stage 3).

Membership

Mandatory attendees:

- Chair (Head of Service or delegated senior manager)
- Allocated social worker & Team Manager of all children considered
- Police
- Health representative
- Education representative
- Referring agency

- Additional partners as required: Youth Justice, Housing, Voluntary Sector, and other relevant professionals.

Meeting Standards

- Convene within 24 hours of decision to hold a strategy discussion.
- Use secure virtual platform or hold meeting in person.
- Agenda must include risk assessment, information sharing, immediate safety planning, roles, responsibilities, and timescales.
- Record decisions and rationale in line with London CP Procedures and distribute to participants within 72 hours, upload to the electronic case system.

Link to Multi-Agency Panels (MACE/MEGA)

Depending on established and known risk, refer to MEGA if necessary.

If complex with multiple children, chair to consult chair of MACE panel for sharing strategic oversight and tracking, as set out in London Child Exploitation Strategy and London MACE Protocol.

Agenda

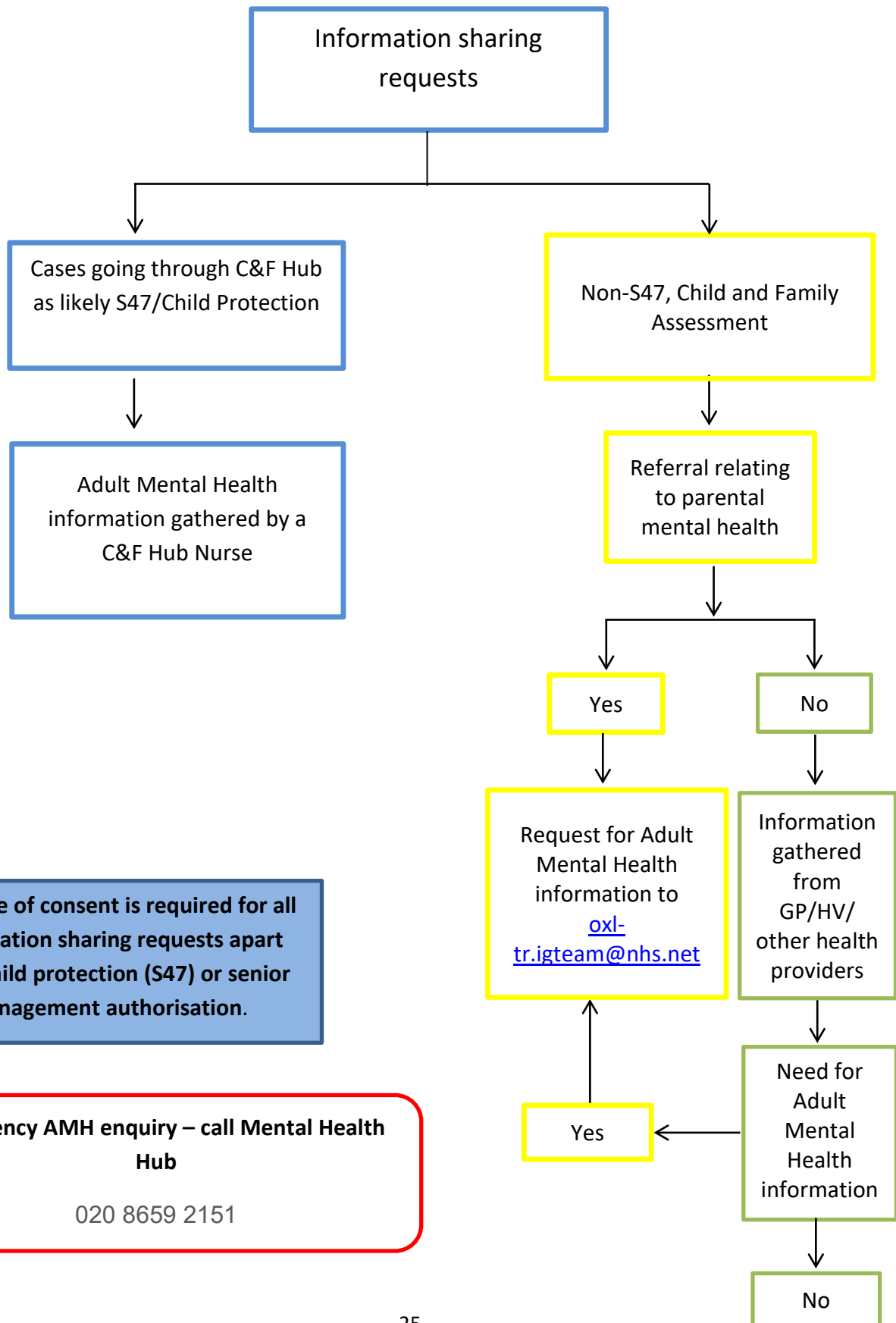
London Safeguarding Children Procedures suggest agenda items where a Strategy meeting is held for child/ren who have been sexually exploited.

[PG43. Sexual Exploitation](#) See appendix 2 for suggested agenda

Where the Strategy Discussion confirms that the investigation will relate to complex and organised abuse, it will appoint a multi-agency Strategic Management Group (see London Safeguarding Child Procedures [Section 6, The Strategic Management Group](#)) to oversee the process.

Appendix 7

**Information Sharing Flowchart
Children's Social Care and Bromley Adult Mental Health Services**



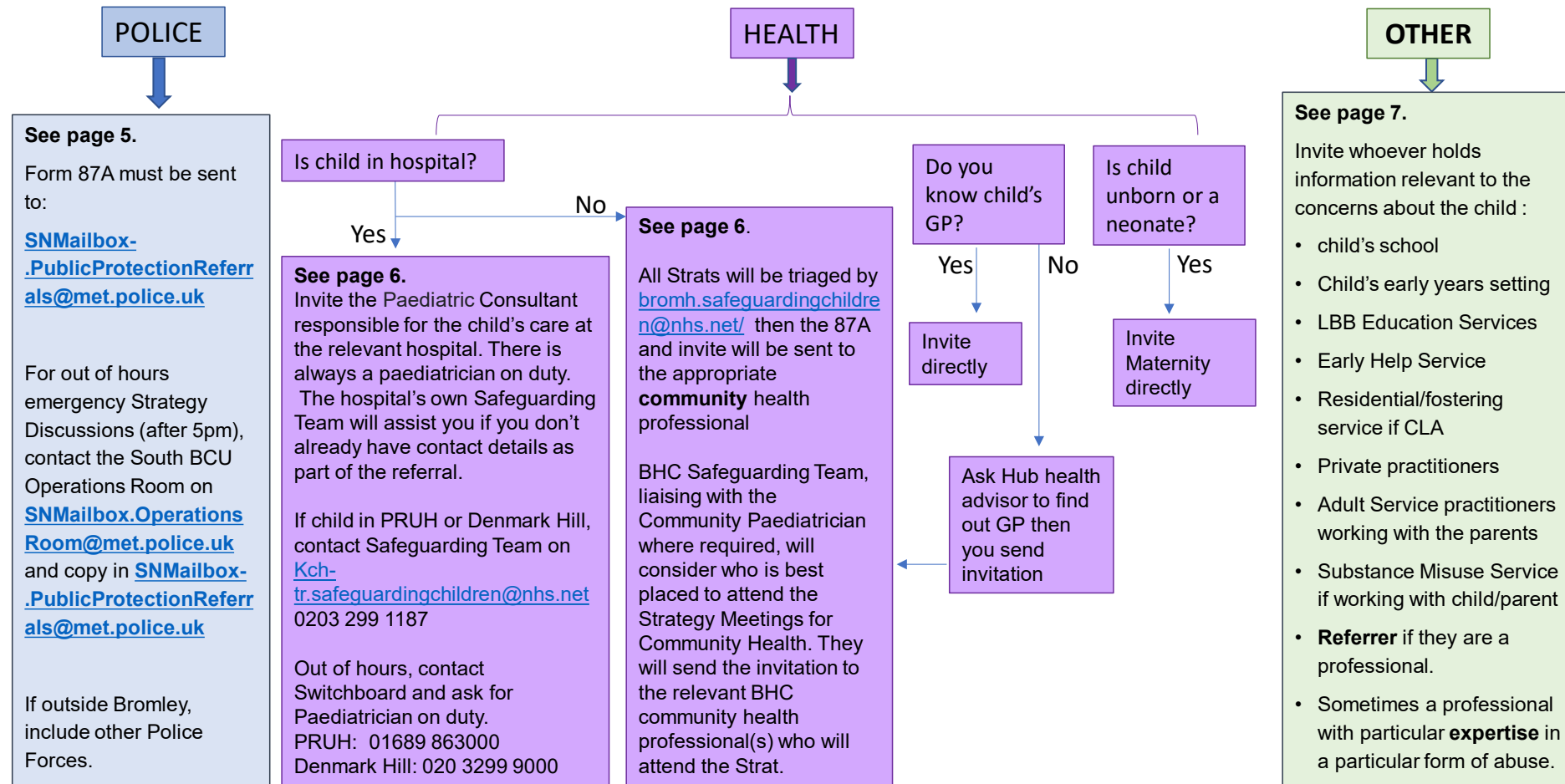
Evidence of consent is required for all information sharing requests apart from child protection (S47) or senior management authorisation.

Emergency AMH enquiry – call Mental Health Hub
020 8659 2151

Appendix 8 – Out of Area/Borough School Nurse teams

Southwark and Lambeth School Nurses	Hub Telephone: 020 3049 4777	Gst-tr.SchoolnurseSPE@nhs.net
Croydon School Nursing team	020 8274 6391/6320 for North Croydon Team 0208 714 2560 for South Croydon Team.	ch-tr.croydonschoolnurses@nhs.net
Lewisham & Greenwich Safeguarding team		Lg.shssafeguarding@nhs.net For Lewisham A&E lg.shsscreening@nhs.net
Greenwich School Nursing		oxl-tr.snsouth@nhs.net
Kent School Nursing		kentchft.kentschoolhealth@nhs.net
Bexley School Nursing		bromh.bexleyschoolnursing@nhs.net

QUICK GUIDE: Who Social Worker contacts when convening a Strategy Meeting



October 2025



www.bromleysafeguarding.org