

Child Sexual Exploitation

Bexley Safeguarding Children's Board Conference

14 May 2015



‘Agencies which do not proactively look for child sexual exploitation will as a result fail to identify it.’

CEOP: Out of Mind, Out of Sight 2011

‘Many professionals told us that the victims of sexual exploitation were simply ‘making bad choices or ‘choosing to engage in risky behaviours.’

Rochdale



Conference Aim:

To challenge professional thinking in respect of CSE, recognising it as a Safeguarding issue, requiring a proactive approach when engaging with young people, by all agencies.

Child Sexual Exploitation (CSE)

A National Threat

(David Cameron 3rd March 2015)

Chris Smart DCI

MPS: Sexual Offences, Exploitation and Child Abuse

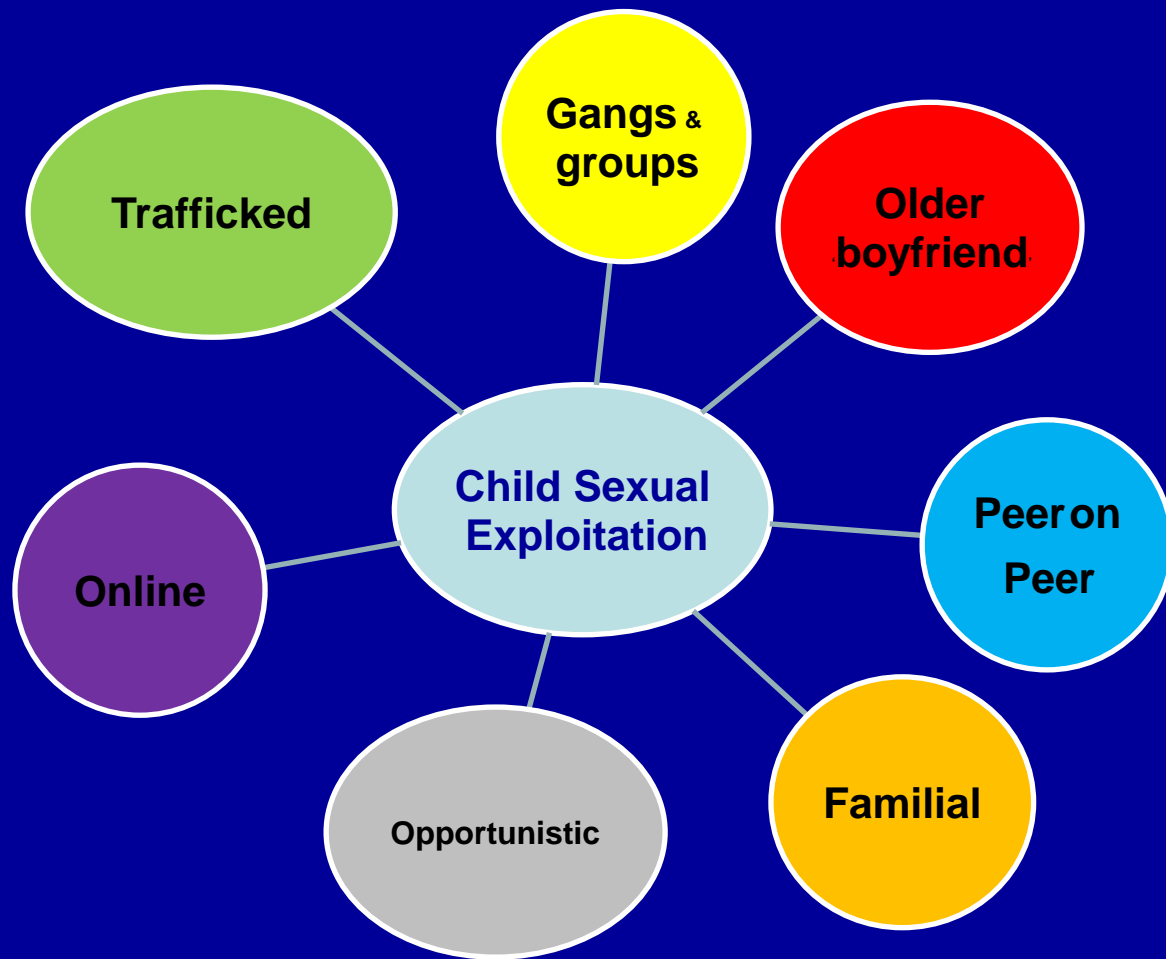
Investigation Command



Sexual **exploitation** of children and young people under **18** involves exploitative situation, contexts and **relationships** where young people (or third person or persons) receive **something** (e.g. Food, accommodation, **drugs**, alcohol, cigarettes, **affection**, gifts, money) as a result of performing, and / or **others** performing on them sexual activities.

Child **sexual** exploitation can occur through use of **technology** without the child's immediate recognition, for example the **persuasion** to post sexual images on the internet/ **mobile phones** with no immediate payment or gain. In all cases those exploiting the child/ **young person** have something over them by virtue of their age, **gender** intellect, physical strength and / or economic or other resources.

National Working Group for Sexually Exploited Children and Young People 2010.



Strategic Context

- Department of Education report into CSE (2009).
- Barnardo's report 'Puppet on a String' (2011)
- Children's Commissioners 2yr report into CSE in Gangs and Groups (Nov 2012 & Nov 2013).
- ACPO CSE action plan (Nov 2012 - updated July 2013).
- Home Office Committee report into CSE June 2013
- Mayors VAWG Strategy Nov 2013
- Rotherham Report x 2
- Operation Bullfinch Serious Case Review (March 2015)



**METROPOLITAN
POLICE**

TOTAL POLICING



S – Sexual Health

A – Absent from School

F – Familial Abuse

E - Emotional and Physical Condition

G – Gangs

U – Use of Technology & Sexual Bullying

A – Alcohol and Drug Misuse

R – Receipt of unexplained Gifts or money

D – Distrust of Authority Figures



**METROPOLITAN
POLICE**



Operation Bullfinch SCR (March 2014) – A victims view

- It was a bit exciting
- They gave us more than my Mum could
- Suddenly the guys were bringing me stuff. They said how lovely I was
- They would buy us things
- They made me trust them for months, and I was their friend. I was flattered
- I wanted an exciting life: after 5-6 months I was involved it was too late
- I believed they were my friends, nothing was more important
- They paid for drinks and gave us drugs

Experiences after grooming.....

- The next thing it isn't nice anymore
- They started nice on the first day, on the second they wanted sex
- They threatened to blow up my house with my Mum in it was just a mish-mash
- Now I feel I was raped, I didn't have any choice
- I wouldn't ever have said no – they'd have beaten the shit out of me
- I hate them, all they do is rape you, all they want is sex
- It wasn't until the trial that I realised the organised nature of the abuse

Victims experience of professionals....

- I was found in the presence of men constantly. Why were they not pulled in?
- Why would a 13yr old make it up
- Social workers asked me questions which showed they knew
- The Police never asked me why – they just took me home
- People were reluctant to see what was clearly in front of them.



**METROPOLITAN
POLICE**



A parents view on Multi-Agency Meetings

- 'They became good at general information sharing but the elephant in the room for all of us was the fact she was being groomed and exploited. I think we all knew it but no service had the language, understanding and tools to acknowledge it, yet alone deal with it.'

The parents experience....

- No one thought about us – what it would be like if it was their daughter
- She was a minor but we were told it wasn't our business
- One manager said 'she's streetwise and loves it'
- Because she came home they thought she was safe now
- Police wouldn't pursue anyone unless they had a cast iron case

London's Child Sexual Exploitation - Operating Protocol

Revised Feb
2015



**METROPOLITAN
POLICE**

TOTAL POLICING



Aims and Objectives

- Apply a pro-active problem solving approach to address risks associated with victims, perpetrators & locations and ensure the safeguarding and welfare of those who are or may be at risk from sexual exploitation
- Take action against those intent on abusing & exploiting children & young people by prosecuting and disrupting perpetrators
- Co-ordinate the activity of all London agencies.

Contents of Protocol

- Easy to follow referral pathway flowcharts.
- Flagging of all CSE suspicions, categories gangs/groups and outcomes.
- Agreed process of CSE referrals.
- CSE Initial Assessment Team (IAT) within The Sexual Exploitation Team
- Creation of a Multi-Agency Sexual Exploitation (MASE) monthly CSE meeting to review all new cases and direct activity against identified trends.



**METROPOLITAN
POLICE**

TOTAL POLICING



Multi-Agency Sexual Exploitation Meeting (MASE)

- Each borough holds a monthly MASE meetings with mandatory membership
- Review progress of CSE cases and ensure action is being taken by whichever agency is involved in individual cases.
- Identify any trends or problem locations and ensure a co-coordinated tactical response to safeguard the child.
- Look at cross border issues and ensure there is a co-ordinated approach with other boroughs.
- Ensure looked after children placed away from the borough and at risk of CSE are being protected by the agencies where they are located.



CSE CATEGORIES

Grouped into 3 different categories:

- **Category 1:** A vulnerable child or young person, where there are concerns they are being targeted and groomed and where any vulnerability factors have been identified. However, at this stage there is no evidence of any offences
- **Category 2:** Evidence a child or young person is being targeted for opportunistic abuse through the exchange of sex for drugs, perceived affection, sense of belonging, accommodation (overnight stays), money and goods etc. The likelihood of coercions and control is significant.
- **Category 3:** Evidence a child or young person whose sexual exploitation is habitual, often self denied and where coercion/ control is implicit



Tactical options

- Abduction notices
- Repeat visits to victims/those at risk
- PNC markers (victims, perpetrators)
- Forensic strategy/retrieval
- Civil orders
- Other offences/legislation
- CCTV/ANPR
- Covert tactics
- Briefing relevant people

Pan London – Sexual Exploitation Teams

- SPOCs in place for all London 32 Boroughs – 100% attendance at MASE meetings, including weekly contact with Borough officers
- Quarterly Regional Meetings including partners established to share good practice
- Established links with CSE teams nationally
- Initial Assessment Team (IAT) to review all CSE reports MPS wide and identify links with gangs / groups and ensure correct grading of reports
- Supervision and performance framework established to protect victims



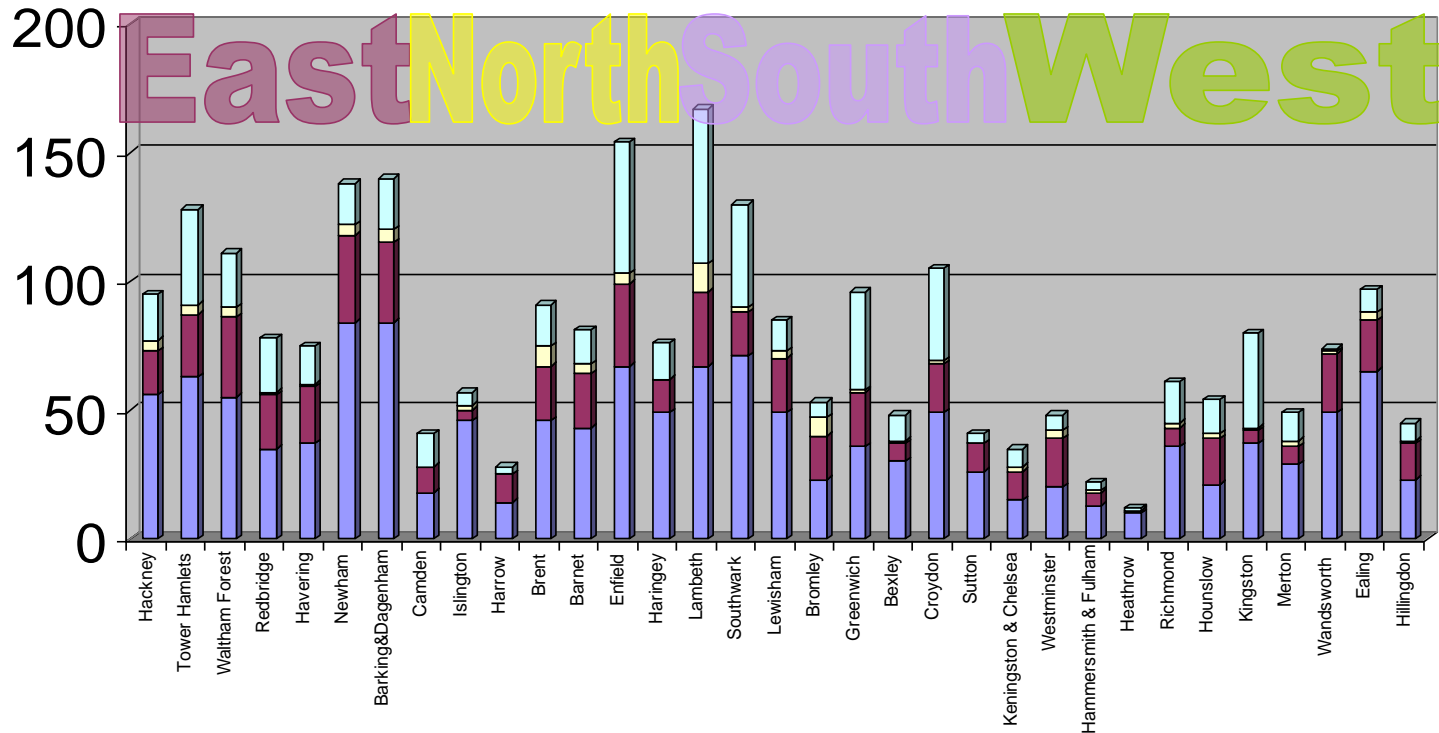
TOTAL POLICING



- Int / Disrupt
- Detections
- Crime
- Suspicion

Suspicion of CSE and CSE related crime

01/04/14 to 31/03/15



Case Study

- 15 year old girl missing 46 times in three months
- Learning difficulties and a cognitive mental age of 8
- Parents concerned re older boyfriend
- Returned home from missing episodes with bruises.
- Cut off her own hair
- Disabled younger sibling
- Made allegations of physical and sexual assault against step father.
- Not attending school
- Concerns re drug and alcohol abuse

- Forensic opportunities
- Established that victim was associating with a 26 year old Asian male who was the owner of a local café.
- Only intelligence on male was that he stopped with a 13 year old girl in the back of his car, partially clothed 3 months earlier.
- Joint working with Children's social care
- Victim engagement
- Support for the family
- Direct Surveillance authority on the café
- Found association
- Served abduction notice

- Abduction notice – short term impact
- Directed Surveillance Authority to follow victim
- Suspect arrested for S2 child Abduction (Insufficient to charge)
- CCTV from Café seized

16/12/2013 01:14:56 MON



**METROPOLITAN
POLICE**

TOTAL POLICING



Case Study - Operation Tafelberg



**METROPOLITAN
POLICE**



Consent as defined in Sexual Offences Act 2003.

- 'A person consents if she/he agrees by **CHOICE** and has the **FREEDOM** and **CAPACITY** to make that choice

The Bexley Safeguarding Children Board requires all agencies dealing with children to always ask the question, '**Why is this child not at risk of CSE?**' in their assessment protocols and strategic documents.

<http://www.bexleylscb.org.uk/>



The Bexley Safeguarding Children Board requires all agencies dealing with children to always ask the question, ‘**Why is this child not at risk of CSE?**’ in their assessment protocols and strategic documents.

<http://www.bexleylscb.org.uk/>

